



Creating Frameworks by Establishing Business Partnerships

4

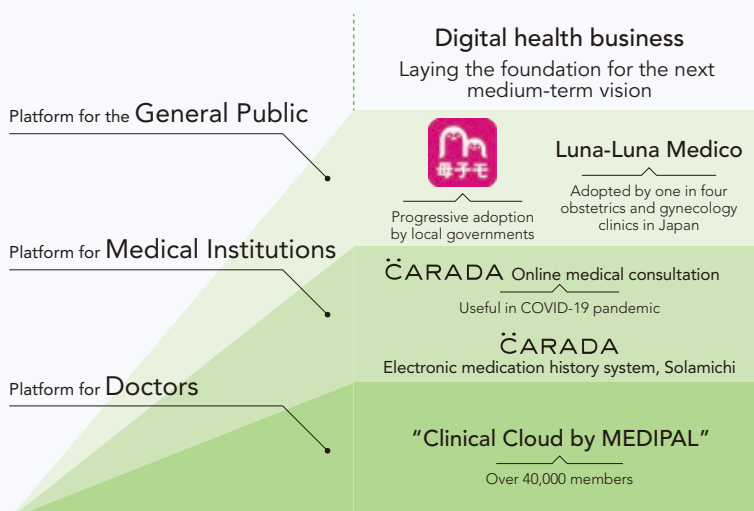
Through collaboration with companies in various fields, medical institutions, and local governments, we are building business models not bound by existing frameworks.

Providing Groundbreaking Services Unique to MEDIPAL

To continue to respond to increasingly diverse social needs, we are collaborating with companies in various fields, as well as medical institutions and local governments, to create new and unprecedented business models. In addition to the MEDIPAL Group's network of pharmaceutical companies and medical institutions, we leverage our special capabilities, such as our nationwide distribution network and technology for pharmaceutical distribution at controlled temperatures, to develop groundbreaking services unique to the Group.

In particular, by providing digital healthcare solutions in the medical and healthcare sectors, we offer numerous services that benefit not only medical institutions but also the health of patients and the general public by integrating face-to-face relationships with digital communication

■ Building a Digital Healthcare Platform: Integrating Face-to-Face Relationships with Digital Communication



■ Main Initiatives

Company name	Initiative
SBI Investment Co., Ltd.	Joint establishment of CVC (corporate venture capital) fund called MEDIPAL Innovation Fund in 2021. Leveraging SBI Investment's accumulated experience in nurturing venture businesses, we will invest in startups where synergies with MEDIPAL's businesses can be expected.
H.U. Group Holdings, Inc.	Strategic business alliance in the medical and healthcare sectors in 2020. Aims to realize ESG/SDG-friendly low-environmental burden operations through the sharing of ordering systems, warehouse infrastructure, and other logistics functions. In addition, the initiative aims to promote the utilization of medical and healthcare information and exploration of projects in the field of regenerative medicines.
Mitsubishi Logistics Corporation	Business alliance in 2019. Aims to establish an optimal pharmaceutical distribution system covering all processes from launch to delivery to final customers. In addition, the initiative will establish a platform for distribution under strict temperature control using DP-Cool, a refrigerated pharmaceutical transportation service compliant with GDP (good distribution practice) guidelines.
MTI Ltd.	Capital and business alliance in 2016. Various projects including promotion of Luna-Luna Medico service, which puts women in touch with physicians, and child health handbook app "Boshi-mo" operated by MTI. Subsidiary CARADA medica Inc. also promotes the spread of "CARADA online medical consultation" and "CARADA electronic medication history system, Solamichi."
Medical Data Vision Co., Ltd.	Capital and business alliance in 2006. Creation and operation of the medical information portal site "Clinical Cloud by MEDIPAL" in collaboration with the partner's subsidiary Doctorbook Inc.