

Subsidiaries and Affiliated Companies

(as of June 28, 2001)

PHARMACEUTICAL WHOLESALE COMPANIES

KURAYA SHOJI, INC.

4-25-12, Ishihara, Sumida-ku, Tokyo 130-0011
Phone: 81-3-3626-6555
Fax: 81-3-3626-6551
Established: September, 1971
Lines of business: Sales of general-use pharmaceuticals, medical apparatus, health machines and equipment

HISATOMO KURAYA, INC.

Hongo Bldg. 3F, 5-24-7, Hongo, Bunkyo-ku, Tokyo 113-0033
Phone: 81-3-5684-3700
Fax: 81-3-5684-3903
Established: July, 1989
Lines of business: Sales of clinical inspection chemicals, reagents, inspection equipment, and pharmaceuticals

YAMAHIRO INC.

2, Ryutsudanchi Kita, Tatomi-cho, Nakakoma-gun, Yamanashi 409-3845
Phone: 81-55-273-8911
Fax: 81-55-273-0079
Established: January, 1950
Lines of business: Sales of pharmaceutical products

NISHIDA YAKUHIH CO., LTD.

20-Migi 7, 5 Jyodori, Asahikawa, Hokkaido 078-8215
Phone: 81-166-31-6121
Fax: 81-166-35-2123
Established: July, 1947
Lines of business: Sales of pharmaceutical products

IZUTSU YAKUHIH Co., Ltd.

5, Nioumon-cho, Karasuma Higashi Iru, Nijyodori, Nakagyo-ku, Kyoto 604-0854
Phone: 81-75-211-5151
Fax: 81-75-211-5790
Established: October, 1950
Lines of business: Wholesale distribution of pharmaceutical products
Homepage: <http://www.izutsu.co.jp/>

HEISEI YAKUHIH CO., LTD.

1-1, Motomachi, Gifu-shi, Gifu 500-8185
Phone: 81-58-265-8886
Fax: 81-58-265-8488
Established: January, 1929
Lines of business: Wholesale distribution of pharmaceutical products

USHIODA SANGOKUDO YAKUHIH CO., LTD.

1852-4, Otsuka-cho, Mito-shi, Ibaraki 311-4143
Phone: 81-29-251-5151
Fax: 81-29-251-4425
Established: May, 1949
Lines of business: Wholesale distribution of pharmaceutical products

Chiyaku Co., Ltd.

3-2, Tonya-cho, Chuo-ku, Chiba-shi, Chiba 260-0025
Phone: 81-43-248-1001
Fax: 81-43-242-0469
Established: July, 1953
Lines of business: Wholesale distribution of pharmaceutical products
Homepage: <http://www.chiyaku.co.jp/>

SENSHU YAKUHIH CO., LTD.

4-9-5, Oroshi-cho, Akita-shi, Akita 010-8511
Phone: 81-18-885-0131
Fax: 81-18-823-5509
Established: February, 2001
Lines of business: Wholesale of medical-use pharmaceuticals

HOSSP CORPORATION

1-12-27, Nobidome, Niiza-shi, Saitama 352-0011
Phone: 81-48-480-2880
Fax: 81-48-477-6292
Established: April, 1999
Lines of business: Sales of medical equipment, instruments, and examination materials

COMPANIES WITH BUSINESS TIES

ATOL CO., LTD.

2-2-51, Handobashi, Hakata-ku, Fukuoka-shi, Fukuoka 816-8552
Phone: 81-92-451-8771
Fax: 81-92-451-8754
Established: January, 1947
Lines of business: Wholesale of medical-use pharmaceuticals
Homepage: <http://www.atol-com.co.jp/>

EVERLTH Co., Ltd.

6-1-60, Yaga, Higashi-ku, Hiroshima-shi, Hiroshima 732-0042
Phone: 81-82-288-3312
Fax: 81-82-510-0263
Established: April, 1950
Lines of business: Wholesale distribution of pharmaceutical products.
Homepage: <http://www.everlth.co.jp/>

HEALTHCARE RELATED COMPANIES

ORIENTAL PHARMACEUTICAL CO., LTD.

1452-3, Aza Yakushihara Minami, Ohaza Takasen, Tendo-shi, Yamagata 994-0088
Phone: 81-236-55-4335
Fax: 81-236-55-4360
Established: August, 1946
Lines of business: Manufacturing and sales of pharmaceuticals and food additives

ELF Co., Ltd.

c/o Shato Seiko, 5-17-32, Fukushima, Fukushima-ku, Osaka-shi, Osaka 553-0003
Phone: 81-6-6453-5001
Fax: 81-6453-4621
Established: August, 1985
Lines of business: Providing home care services and home helper training programs

KURAYA KASEI, INC.

917, Oaza Inaba, Nagano-shi, Nagano 380-0911
Phone: 81-26-221-2005
Fax: 81-26-222-3665
Established: January, 1998
Lines of business: Sales of chemical industrial items and food additives

HONGOH YAKUHIH, INC.

Hongo Center Bldg. 3F, 2-27-20, Hongo, Bunkyo-ku, Tokyo 113-0033
Phone: 81-3-3815-2511
Fax: 81-3-3815-2633
Established: July, 1988
Lines of business: Management consultancy of pharmacies and sales of pharmacy computers and equipment
Homepage: <http://www.nona.dti.ne.jp/~hongoh/>

M.I.C. (Medical Information College), INC.

Fukuden Bldg. 4F, 2-1-12, Shibuya, Shibuya-ku, Tokyo 150-0002
Phone: 81-3-3499-7541
Fax: 81-3-3499-7544
Established: August, 1984
Lines of business: Training and supplying medical office workers, providing medical office work services on a contract basis, and consulting on medical management

BIGEO Inc.

1-7-35, Horinouchi, Suginami-ku, Tokyo 166-0013
Phone: 81-3-3318-5661
Fax: 81-3-3318-5680
Established: April, 2001
Lines of business: Leasing and cleaning of medical gowns and uniforms

Kuraya (USA) Corporation

3625, Del Amo Blvd., Suite #150, Torrance, CA 90503, U.S.A
Phone: 011-0310-542-4245
Fax: 011-0310-542-4175
Established: July, 1997
Lines of business: Supplying overseas disposable medical goods and sales of medical items

BUTSURYU 24, INC.

76-1, Minato, Urayasu-shi, Chiba 279-0024
Phone: 81-47-305-1820
Fax: 81-47-305-1825
Established: June, 1998
Lines of business: Management and operation of distribution center, collection and processing of information relating to distribution, and distribution of freight goods

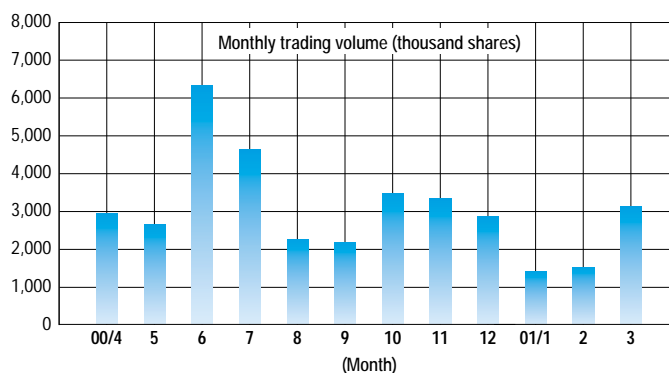
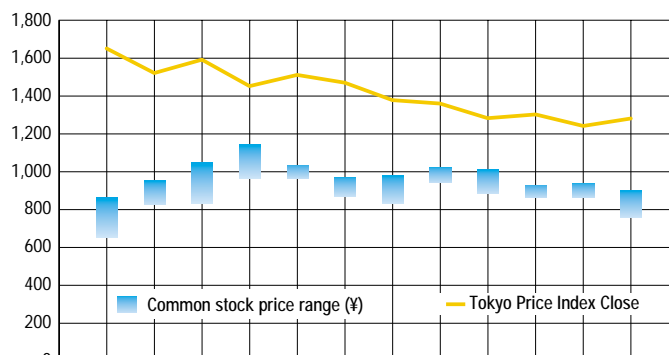
Investor Information

(as of March 31, 2001)

| | |
|--|---|
| Corporate Name | Kuraya Sanseido Inc. |
| Head Office | 7-15, Yaesu 2-chome, Chuo-ku, Tokyo 104-8464, Japan Tel: 81-3-3517-5050 Fax: 81-3-3517-5011 http://www.kurayasanseido.co.jp |
| Founded | October 1898 |
| Established | May 1923 |
| Paid-in Capital | ¥11,153 million |
| Number of Outstanding Shares | 136,705,869 |
| Stock Listings | Tokyo, Osaka |
| Ticker Code | 7459 |
| Trading Unit | 100 shares |
| Transfer Agent for Common Stock | Sumitomo Trust & Banking Co., Ltd. |
| General Meeting of Shareholders | The Ordinary General Annual Meeting of Shareholders is held annually in June. |
| Further Information | Investor Relations Department Tel : 81-3-3517-5171 |

Stock Price Range & Trading Volume

(Tokyo Stock Exchange)



Principal Shareholders

| | Number of Shares Held (thousand) | Percentage of Total Shares |
|--|----------------------------------|----------------------------|
| Takeda Chemical Industries, Ltd. | 18,744 | 13.71% |
| Employees Shareholders' Association | 11,705 | 8.56 |
| Mizuho Trust and Banking Co., Ltd. | 6,588 | 4.82 |
| Sadatake Kumakura | 3,417 | 2.50 |
| Yamanouchi Pharmaceutical Co., Ltd. | 2,821 | 2.06 |
| The Mitsubishi Trust and Banking Corporation | 2,503 | 1.83 |
| The Asahi Bank, Ltd. | 2,477 | 1.81 |
| Osamu Takumiya | 2,373 | 1.74 |
| Sakura Bank, Ltd. | 2,313 | 1.69 |
| OM 04 SSB Client Omnibus | 2,101 | 1.54 |